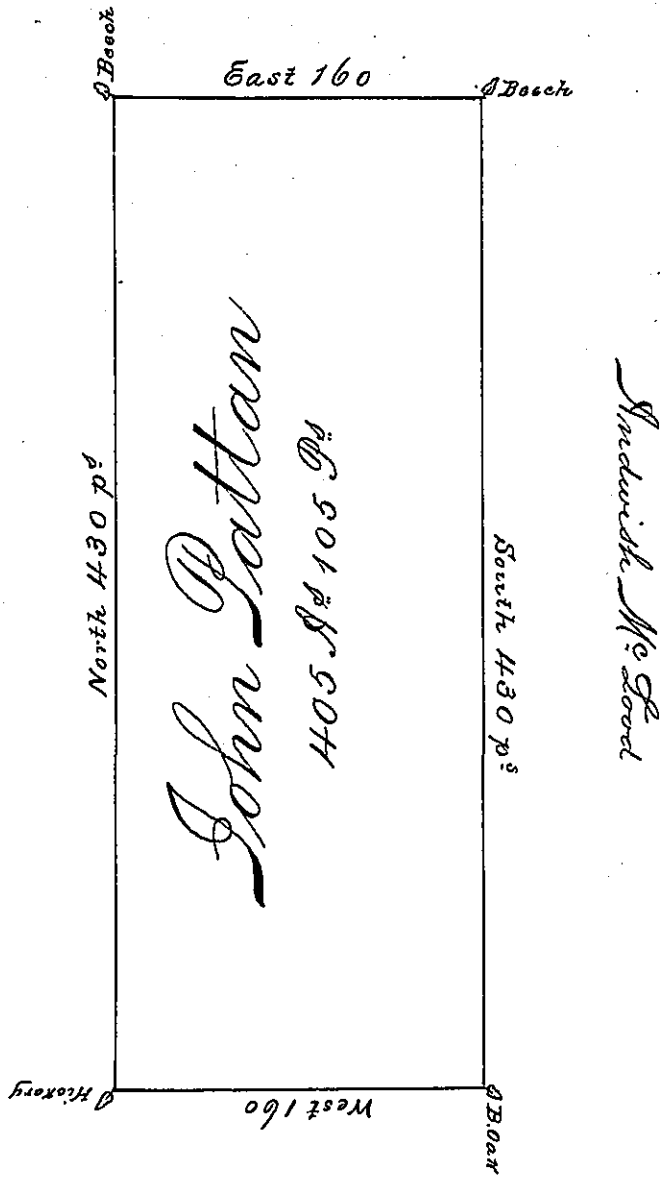


James Miller



George Graeff

Archibald McLeod

Eliz. Hamilton

Situated on the Waters of Blacklick Creek  
 in Wheatfield Township Westmoreland County  
 Containing 405 Acres & 105 perches & Allow-  
 ance for Roads &c Surveyed for John Pattan  
 the 4<sup>th</sup> day of Decem<sup>r</sup> 1794 on Warrant dated  
 the 3<sup>d</sup> day of May 1793

James Ross D.S

Daniel Broadhead Esq. S.G.

IN TESTIMONY that the above is a copy of the original remaining on file in the  
 Department of Internal Affairs of Pennsylvania, made con-  
 formably to an Act of Assembly approved the 16th day of  
 February, 1833. I have hereunto set my Hand and caused  
 the Seal of said Department to be affixed at Harrisburg, this

fourth day of August 1896

James W. Latta  
 Secretary of Internal Affairs.